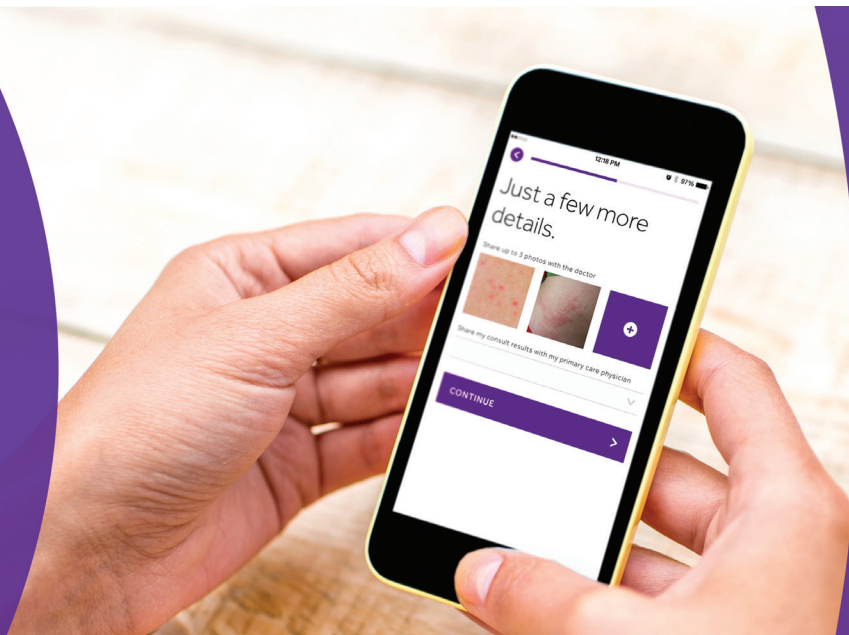




TELADOC®

Dermatology



Today's Dermatology care **doesn't feel so good...**

INCREASED NEED

Patient need for dermatological care is consistently growing



LIMITED ACCESS

Up to 42% of the U.S. lives in areas underserved by dermatologists



HIGH COST

Average cost of seeking care in a traditional office is \$858



LONG WAITS

Average wait time to see a dermatologist is 28.8 days



LOW QUALITY

High occurrence of delayed or missed diagnoses



Teladoc is **making it better!**



INTEGRATED SOLUTION WITH TELADOC MEDICAL

Teladoc Dermatology tackles the biggest problems in healthcare: **access, quality and cost**



ENHANCED ACCESS

Physician response within 2 business days



CLINICAL QUALITY

High-resolution mobile imaging improves diagnoses



COST SAVINGS

Teladoc visits are just \$75/visit



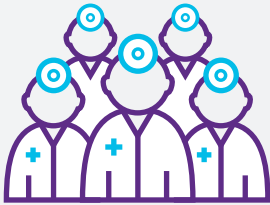
Teladoc leads the market with the **industry's most comprehensive** Dermatology solution

Patients receive convenient, quality care from experienced Dermatologists, saving them considerable cost.



CLINICAL QUALITY

- Fully credentialed network of experienced Dermatologists
- Dermatology protocols, guidelines and quality assurance tailored to telehealth
- Dermatology-specific medical questionnaire
- Prevents misdiagnoses often driven by primary care physician
- Image capture provides condition progression, thus enhancing quality of care
- With member's permission, ability to share information with other providers



ENHANCED ACCESS

- Response within 2 business days (versus average of 28.8 days for office-based care)
- Patients conduct follow-up and additional visits with the same provider, if desired
- 'Asynchronous' image upload ('Store & Forward') is user friendly, discreet & convenient
- Targeted communications to drive awareness & utilization



COST SAVINGS

- Lower cost than in-person for initial visit (plus free follow-up within 7 days)
- Many dermatological conditions require ongoing care – follow-up is easier, more accessible, and obtained at a lower cost
- ER / Urgent Care / PCP avoidance improves ROI & outcomes
- Improves productivity by reducing absenteeism
- Screenings & timely assessments prevent more costly visits later